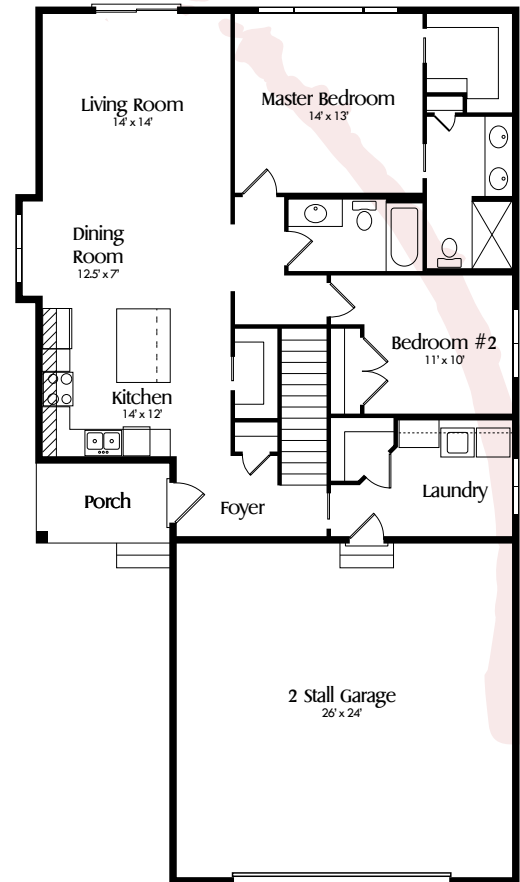


The Victoria

Inspiration Series



Main Level
1,392 Sq. Ft.

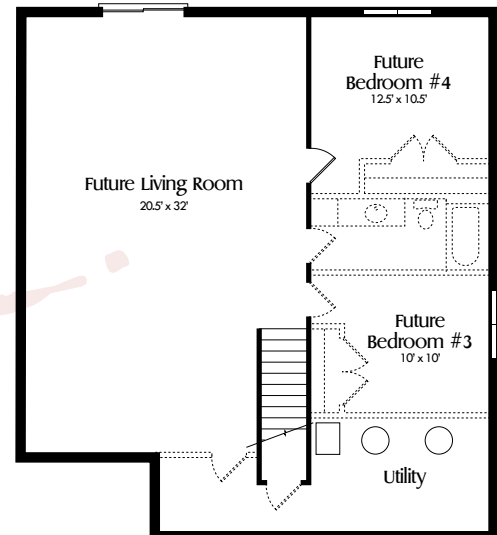


The Victoria is a well laid out floor plan. You'll love the open concept, large kitchen island and optional living room fireplace. Enjoy the spacious master suite with large windows, a walk-in closet and private bathroom with tiled shower. You'll appreciate laundry in the mudroom on the main level with a large closet for storage.

Finish the basement to add more finished square footage to this beautiful home.

Contact an Oeving Homes Representative for more information.
715-243-0001 Ext. 1
info@oevinghomes.com

Lower Level
1,380 Sq. Ft.



OEVERING HOMES

ESTABLISHED 2002

Elevations and floorplans are artist's concepts only and are subject to change without prior notice. All homes are subject to local codes. Square footages are approximate and may vary. Please consult your Oeving Homes Representative for details.

04/21/22