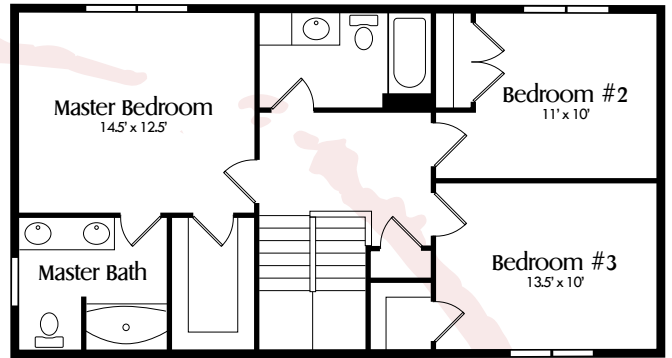


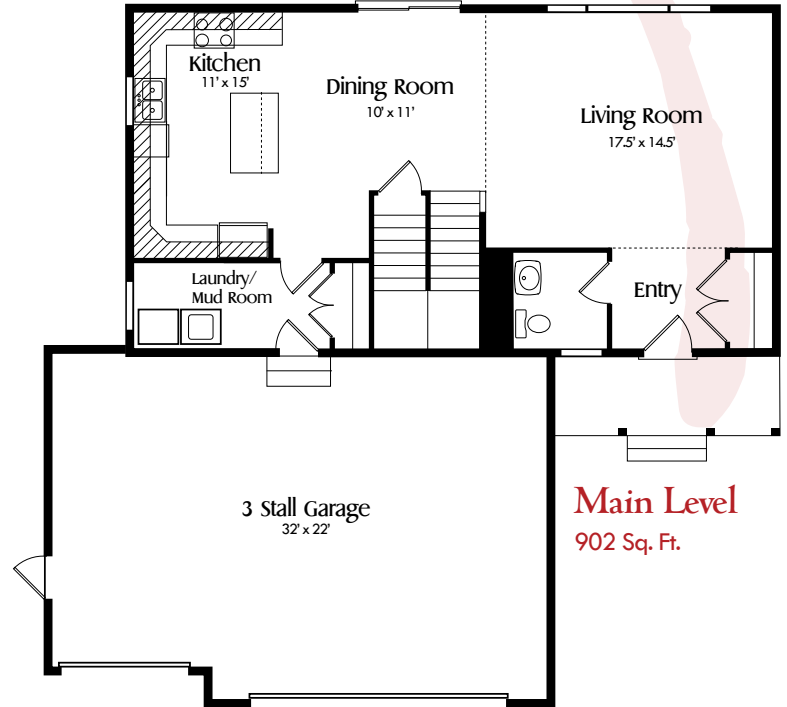
# The Teak A

## Inspiration Series

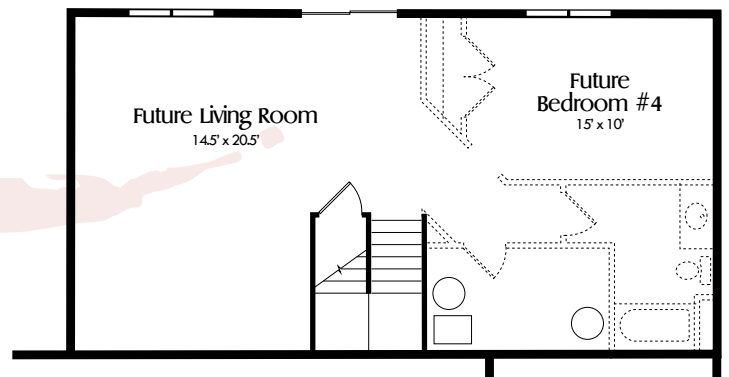
Upper Level  
902 Sq. Ft.



The Teak floor plan offers a beautiful front porch and an open floor plan. This two story house has 3 bedrooms, 3 bathrooms, and a 3 car garage. The benefits of this home include a main floor laundry room, large kitchen with lots of storage space and a master suite with walk-in closet. Tailor the look of this home to fit you by choosing your own selections including: granite, flooring, cabinetry colors, exterior colors, and other quality finishings!



Contact an Oeving Homes Representative for more information.  
Shari Hensley 612-812-1639  
Oranzo Oeving 715-760-0001  
Emily Blaser 715-781-3762



Lower Level  
902 Sq. Ft.

**OEVERING HOMES**  
ESTABLISHED 2002

Elevations and floorplans are artist's concepts only and are subject to change without prior notice. All homes are subject to local codes. Square footages are approximate and may vary. Please consult your Oeving Homes Representative for details.  
03/20/21