

The Sequoia A

Inspiration Series



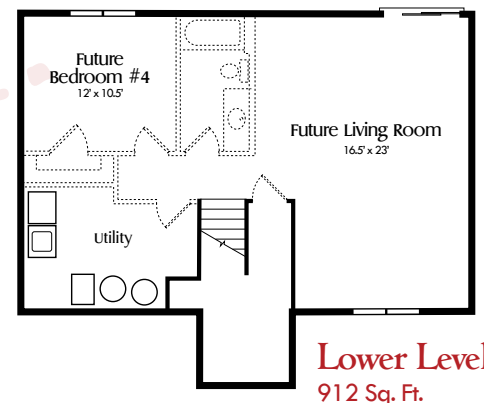
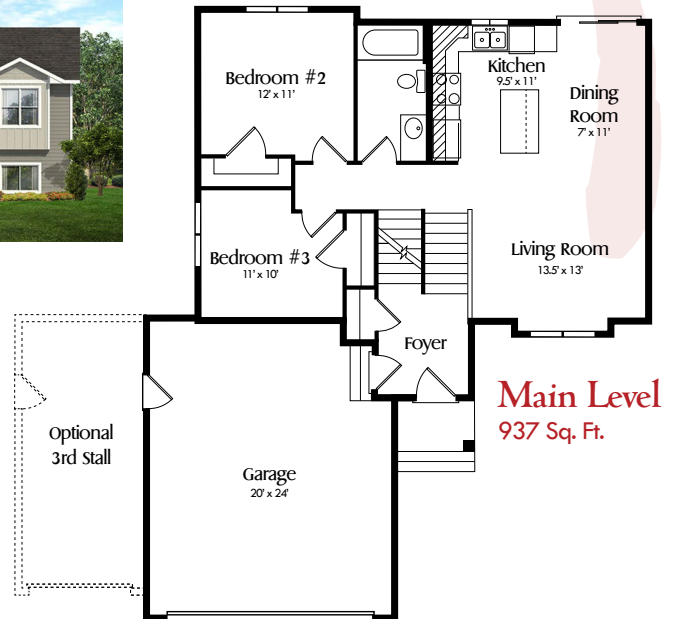
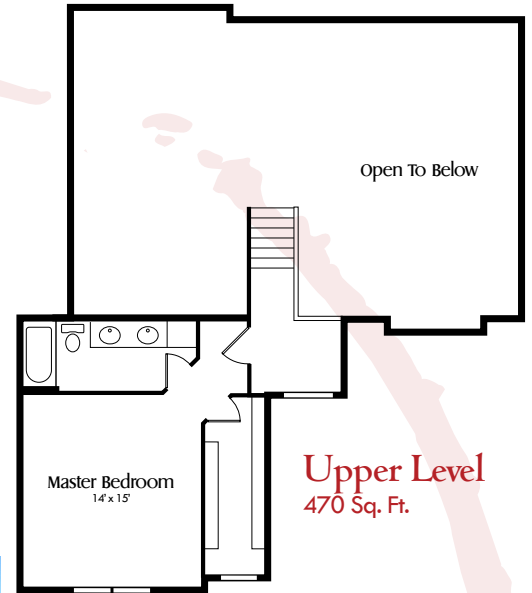
The Sequoia A 3 - Car

The Sequoia's unique floor plan is a popular choice for those looking for a master suite at a great price! This 3 bed 2 bath home takes a classic split level home to the next level by adding a master suite above the garage. The master suite includes a vaulted ceiling, a walk-in closet, and a full bath with a double vanity.



Need more space? Add a 3rd stall garage or finish the basement for another bedroom, a bathroom, and another cozy family room. You are able to make this home truly yours by choosing your own selections including: granite, flooring, cabinetry colors, exterior colors, and other quality finishings!

Contact an Oevering Homes Representative for more information.
 Shari Hensley 612-812-1639
 Oranzo Oevering 715-760-0001
 Emily Blaser 715-781-3762



OEVERING HOMES

ESTABLISHED 2002

Elevations and floorplans are artist's concepts only and are subject to change without prior notice. All homes are subject to local codes. Square footages are approximate and may vary. Please consult your Oevering Homes Representative for details.
 03/20/21