

The Tecoma

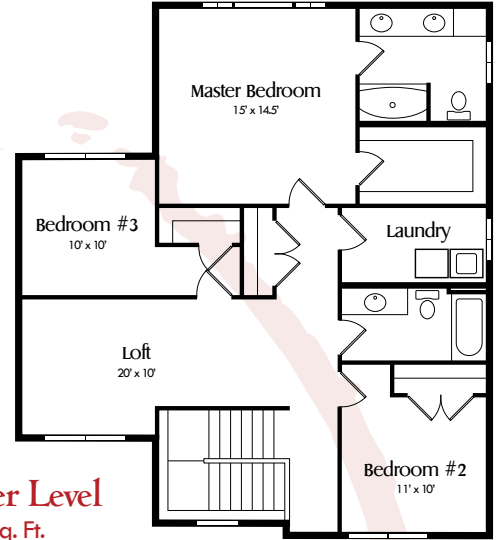
Inspiration Series



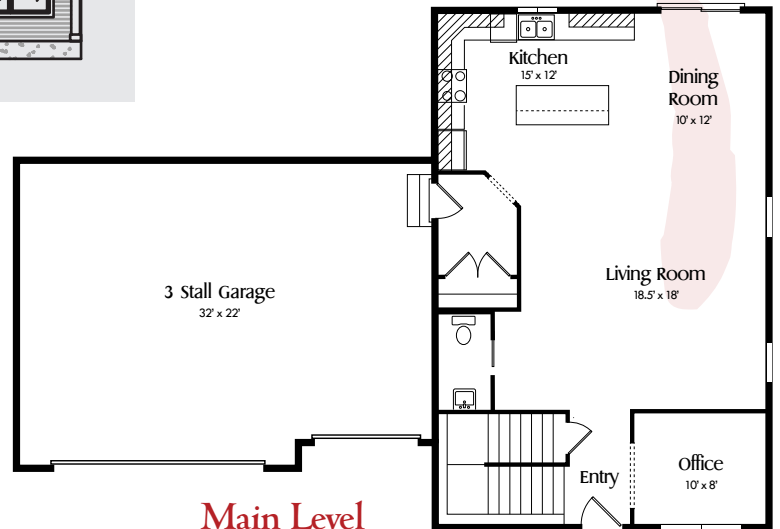
This charming 2 story offers open concept living with large entry and mudroom/laundry room. On the second story you will find 3 bedrooms, plus a bonus room and 2 bathrooms.

The master suite offers a sense of luxury with a full bath and walk-in closet. Personalize your home by selecting colors, fixtures, and other elements for your home. Complete your home with a finished basement for another bedroom, bathroom, and family room.

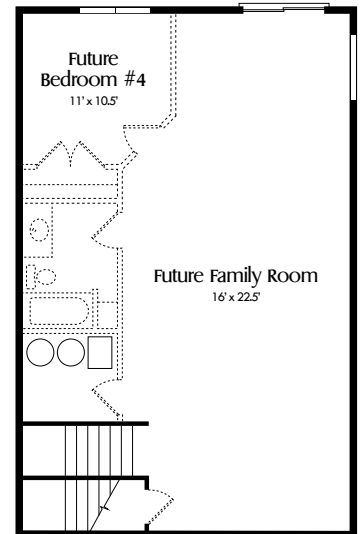
Contact an Oeving Homes Representative for more information.
 Shari Hensley 612-812-1639
 Oranzo Oeving 715-760-0001
 Emily Blaser 715-781-3762



Upper Level
1,204 Sq. Ft.



Main Level
960 Sq. Ft.



Lower Level
960 Sq. Ft.



OEVERING HOMES

ESTABLISHED 2002

Elevations and floorplans are artist's concepts only and are subject to change without prior notice. All homes are subject to local codes. Square footages are approximate and may vary. Please consult your Oeving Homes Representative for details.
 03/20/21